

# The Greater Dover Historical Society, Inc,

Newsletter - May-Aug. 2005

## MARK YOUR CALENDAR

May, 19, 2005 Reg. Mtg. 7:30 pm at Calvary Lutheran Church

June 16, 2005 Reg. Mtg. 7:30 pm at Calvary Lutheran Church

June, 21 2005 Historical Walk at the Log House @ 6:00 pm

July 21, 2005 Society Picnic at Lehr Park @ 5:30 pm

Aug.18,2005 Reg. Mtg. held at Log House @ 7:30 pm

## GDHS QUILT FUNDRAISER

The Quilt Raffle is a fundraiser that helps the Society meet its budget. We ask members to help the Society sell their share of tickets. See Norma Botterbusch for your tickets. Each ticket is \$1.00 or 6 tickets for \$5.00. Please call 292-7894. Tickets may be picked up at the May meeting. The Quilt drawing will be held on June 21, 2005 at the Log House on West Canal Road after the Historical Walk of Dover Borough. The Society would like to thank the Lady Quilters for their time in making this beautiful quilt and donating it to us. We thank everyone who purchased tickets. For a picture of the quilt, check the website.

## BRAD LENTZ

We would like to congratulate Brad Lentz on his appointment to Dover Borough Manager. We appreciate Brad being our liaison to the Borough Council. Brad has been taking care of getting all our permits for re-building the Black Smith Shop. Brad and his family are members of the Society.

## 5TH ANNUAL DOVER HISTORICAL WALK

June 21 at 6 pm at the Log House on West Canal Road is the meeting place for our 5th Annual Historic Walk through Dover Borough. Will be held rain or shine. Kay Stitley will once again conduct the walk. Light refreshments and drinks will be provided. We are asking for donations of finger type desserts. Please call Norma at 292-7894. Please invite your friends and neighbors.

## ARCHIVES

Well it's that time of the year again for Spring Cleaning. Encourage your friends and neighbors as they clean out their attics not to throw anything away without first checking with the Historical Society. Another good source is Yard Sales and auctions. Always be on the lookout for Dover items. Any donations to the Historical Society should be made through Gayle Heagy (phone-292-1976) Botterbusch Jewelry (phone 292-7894) or at the monthly meetings.



# **PICNIC!**

## 3rd ANNUAL SOCIETY PICNIC

July 21 is our 3rd Annual members picnic to be held at Lehr Park along Davidsburg Road. We start serving at 5:30 pm, but promise to leave some food for those who arrive late. RSVP with number attending to Norma Botterbusch at 292-7894 or Susan Forrey at 292-6190. We will be serving Wynn's famous broasted chicken and potatoes. There will be hot dogs for the kids and for the grown up kids. The only thing we ask that you bring is, yourself, your immediate family and your famous dessert. If you would like to help on the refreshment committee call the numbers above. There will be a sign-up sheet at the May and June meetings. We need a final count by July 7th. Come out for an enjoyable evening.

### TRASH BAG FUNDRAISER

Help us keep our Trash Bag Fundraiser going strong. You can purchase the 33-gallon bags with our name imprinted at Botterbusch Jewelry or at our regular meetings. 25 bags for \$4.00 or a case (200) for \$30.00.

Judy Hoffman  
 Andrew Green  
 Robert T. Forrey  
 Marty Green  
 Lewis Kunkel

### WELCOME NEW MEMBERS

Lucia Hrinyak  
 Michael Hrinyak  
 Christine Ziegler  
 Theodore Ziegler  
 Elizabeth Knaub

Baughman Memorial Works

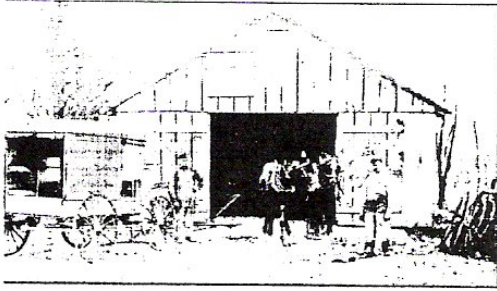
### Double Creek Tour & Run in Dover

On Sat. June 18, Wellspan Health will be sponsoring the Double Creek Tour & Run in Dover. We are pleased to have Sen. Mike Waugh as the Honorary Chair for this year's event. The race will start @ North Salem Elem. School and wind through the country roads surrounding the Dover area, passing the scenic Conewago and Bermudian Creeks from which the race gets its name. The first race will start at 7:00 am along with the bike tours. At 9:15 the 5k run will start and at 10:00 is the Fun Run. The proceeds from the race benefit the Healthy Community Pharmacy program. This program provides prescription medicine for those people who might not otherwise be able to afford it. Last year, over \$85,000 was used to help residents in the Dover area alone.

As a member of the G.D.H.S. I would like to extend the opportunity to other G.D.H.S. members to come out and support the event by volunteering. This is our opportunity to show off Dover and it's residents. If you have any questions please contact Mr. Brett Pfeigr @ [doublecreekhm5k@wellspan.org](mailto:doublecreekhm5k@wellspan.org) or 717-324-0803 or Mrs. Dee Baker [dbaker3@wellspan.org](mailto:dbaker3@wellspan.org) or 717-851-4210. [www.doublecreek.org](http://www.doublecreek.org).

### NEWSLETTER

If you have any info that you would like to share with the Society - Call Norma Botterbusch at 292-7894.



DOVER BLACKSMITH SHOP CIRCA 1911  
L- MELVIN LATCHAW / R - CHARLES MYERS

**WE HAVE OFFICIALLY BEGUN OUR  
BLACKSMITH SHOP REBUILD**

Contractor Rodney Anderson broke ground on Friday April 22 and the footers were poured. On Monday April 25, the electric installation began and on Wednesday, April 27, the cement blocks were delivered. Saturday April 30 was a workday to clean the heavy timbers that will be used to support our shop but it rained. The next scheduled work day is May 7<sup>th</sup> at 8am. Thank you to all the volunteers in advance for your help and patience. The next item on the agenda to complete is to custom cut the timbers to fit the building dimensions. **SATURDAY MAY 21<sup>ST</sup> 8AM** is the day we will raise the timber frame of the shop. All members are asked to help this day. We need people to hammer nails, hold tape measures and levels, to keep the site clean, to take pictures, "go fer", build truss and most importantly - **FEED THE VOLUNTEERS!** No matter your age or body condition - **WE need your help.**

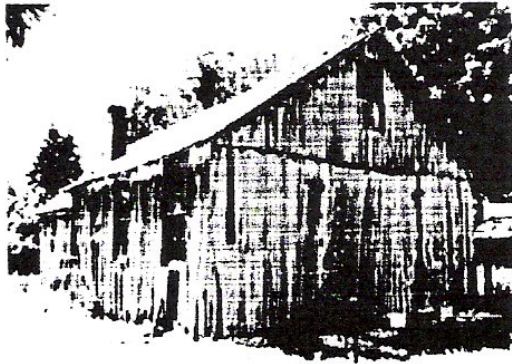
**THEN**

For the next few weeks, with volunteer help in the evenings - the building will begin to take shape. The windows, refurbished by Forrey Millwork will be ready for installation. Jay Bollinger will start to install the electric into the building and Don Miller will start the brickwork on the forge. John Moul Sawmill will have the truss and lathe ready for the volunteers to nail just in time for the standing seam roof to be installed by the very capable crew of employees from Progressive Services. To finish the project, Glen Gerry Brick Company has donated brick to complete the outside of the building. As you can see, the business community has generously donated their time, money and material to this project. Please read our Donor List and thank these business' for helping the community when you shop or ask them to do work for you. They represent the true meaning of Community Spirit.

**TO VOLUNTEER**

Contact Susan Forrey at 292-6190 - or - e-mail

You must be a member and have a signed waiver form to volunteer.



## DONORS FOR GDHS BLACKSMITH PROJECT

**PROJECT MANAGER**  
Ken Brown Construction  
183 Pickett Road  
Dover Pa 17315  
292-6684

**DRAFTSMAN**  
Robert T Forrey  
2630 Municipal Road  
Dover Pa 17315  
308-1726

**FOUNDATION**  
Rodney Anderson  
2721 Blackberry Road  
Dover Pa 17315  
292-1213

**ELECTRICAL CONTRACTOR**  
Jay Bollinger  
5711 Clearview Road  
Dover Pa 17315  
292-4381

**BLACKSMITH ADVISOR**  
Ted A Ziegler  
8535 Carlisle Road  
Wellsville Pa 17365  
432-4250

**MASONRY FOR FORGE**  
Don Miller  
@Ken Snyder Masonry  
Dover Pa 17315  
292-5885 work

**PROJECT COORDINATOR**  
Larry Law  
4420 Paradise Road  
Dover Pa 17315  
292-6293

**HARDWARE**  
Ashley Spangler, Ace Hardware  
4072 Carlisle Road  
Dover Pa 17315  
292-6055 / 292-7476 fax

**TRUSS / LATHE**  
John Moul Sawmill  
5210 Davidsburg Road  
Dover Pa 17315  
292-5847

**SURVEYOR**  
Jan Eisenhart  
24 South Main Street  
Dover Pa 17315  
292-7970

**STANDING SEAMLESS ROOF**  
Larry Toot, Progressive Services Inc  
1806 Spangler Avenue  
Dover Pa 17315  
764-1421

**WINDOWS & SASH**  
Robert S Forrey Custom Millwork  
4371 Schoolhouse Road  
Dover Pa 17315  
292-6190

## **LANDMARKS COMMITTEE**

### **Housing Inventory update**

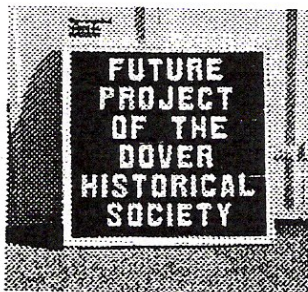
On March 14 committee members attended a three hour training session at Historic York, Inc.

Mindy Higgins, Executive Director of Historic York, provided guidance in identifying architectural styles, original vs. updated features and the historic integrity of the buildings. Numerous houses in York County were used as examples.

Ms. Higgins provided the latest inventory forms used by the Pennsylvania Historic and Museum Commission (PHMC) to record the information collected on the houses on Main and Canal Streets in Dover Borough.

If the Greater Dover Historical Society decides to submit an application to have Dover Borough recognized as a State Historic District, these completed inventory forms would be acceptable to the PHMC. Our sincere thanks and appreciation to Ms. Higgins for her indepth training and offered assistance in our endeavor. The inventory will be underway in May.

### **HAVE YOU SEEN OUR SIGNS?**



One is located at the future site of the Blacksmith Shop; the other is at the Distillery.

## **ON YOUR RETIREMENT**

We would like to congratulate Kay Stitley on her retirement from the Dover Area School District. Kay retired on Friday May 13. We hope they can find someone to fill her shoes. Kay has been a very dedicated employee. Kay is the Society Vice-president and is on our board of directors and was one of the seven people at the first meeting of the G.D.H.S.

Oh by the way Kay, don't plan on relaxing to much, We need you at the Alda Ketterman Park on Sat. May 21 @ 8:00 am to help rebuild the Blacksmith shop.

Kay also conducts our Dover Borough Historical Walk every June.

## **FABERGE EGGS DONATED**

On Thursday, April 28 at 3pm at the Calvary Lutheran Church in Dover, the G.D.H.S. helped the family of the late Dover resident, Charlotte Glass, donate about 40 Faberge eggs. From 1985 until her death, Charlotte made these eggs in her shop on Old Carlisle Rd. People all over the world purchased the eggs as well as displays in the White House and the Smithsonian Institute in Wash. D.C. The West Manchester, East Berlin and Northern York County Historical Societies were the recipients of the donated eggs by Charlottes' sisters. We thank Dottie, June and Nancy for their generous donation to our fellow Historical Societies as well as the generous donation to our Archives about two years ago.

**GREATER DOVER HISTORICAL SOCIETY**

**P.O.BOX 303**

**DOVER, PA 17315-1506**

Larry &  
Joyce Law  
4420 Paradise Road  
Dover, PA 17315

**PRESERVING OUR HISTORY FOR OUR CHILDREN OF THE FUTURE**

**GDHS OFFICERS FOR 2005**

*President Ronald Botterbusch*

*Vice President Kay Stitley*

*Secretary Susan Forrey*

*Treasurer Robert Merkert*

*Archivist Dr. Charles Drawbaugh*

*Historian Norma Botterbusch*

**EXECUTIVE STAFF FOR 2005**

*Assistant Archivist Gayle Heagy*

*Bookkeeper Joyce Law*

**BOARD OF DIRECTORS**

*Jan Eisenhart*

*Randy Worley*

*Madelyn Shermeyer*

*Gayle Heagy*

*Kay Stitley*

**IMPORTANT INFO.**

Website Address – [www.gdhspa.org](http://www.gdhspa.org)

E-mail address – [Doverhistory@gdhspa.org](mailto:Doverhistory@gdhspa.org)

Mailing Address – G.D.H.S., P. O. Box 303

Dover, PA 17315-1506

717-292-7894 – President

717-292-6190 - Secretary

**COMMITTEES**

*Landmarks Gayle Heagy*

*Historic Walk Kay Stitley*

*Bloodroot Madelyn Shermeyer*

*Our Town Characters Joyce Law*

*Web Master Brett Pfleiger*

*Refreshment Norma Botterbusch*